

Handling System Automatic Sorting Table, Dishwashing Driven with 4 Baskets - Right to Left, 2130mm

ITEM # _____

MODEL # _____

NAME # _____

SIS # _____

AIA # _____

**865466 (HSDDS4RL)**Automatic sorting table,
dishwasher driven, 4 baskets,
Right>Left, 2430 mm

Main Features

- "Key holes" and "snap on" system reduces the number of screws needed for fast and easy installation.
- Designed to transport 500x500 mm dishwashing baskets.
- Stacking tables for 7 and 8 baskets on request.
- Optional extras: basin wash nozzles for cleaning the basin.
- Driven by the dishwasher.

Construction

- All surfaces smooth with polished finish.
- Thick welded flanges for sturdy connection between the units.
- Sloping bottom of the table grants a smooth and rapid drainage.
- Stainless steel strainer baskets easy to remove.
- Rack-guides inclined towards the basin.
- Double filter strainer installed on both sides allow the access from both directions.
- Double stainless steel strainer basket for easy operation.
- Constructed in AISI 304 stainless steel with square 40x40mm tubular construction feet and legs.

Optional Accessories

- Pre-rinse unit (thermostatic mixer and shower) to be mounted on overshell PNC 863136 ☐
- Additional waste rack for dishwasher driven and automatic sorting table PNC 863173 ☐
- Soaking basin for cutlery rack including lifting device for dishwasher driven sorting table PNC 863230 ☐
- Emergency stop kit for Rack Type Dishwasher PNC 865162 ☐
- Basket support for vertical stacking of baskets (to be used with overshell) PNC 865208 ☐
- Pre-rinse unit (mixer and shower) PNC 865209 ☐
- Double overshell for 4-basket sorting table, 2120 mm PNC 865299 ☐
- Overshell for 4-basket sorting table, 2120 mm PNC 865430 ☐
- Tray slide for 4-basket sorting table, 2130 mm PNC 865434 ☐
- Tray slide fixing brackets (3pcs) PNC 865437 ☐
- Grid undershell for 4-basket sorting table PNC 865439 ☐
- Pre-wash spray unit, 1500 mm PNC 865443 ☐
- Tray slide for sorting table, 500 mm PNC 865444 ☐
- Tray slide with waste hole and rubber ring, 500 mm PNC 865445 ☐
- Dish scraper PNC 865447 ☐
- Water heating kit for wash basin PNC 865449 ☐
- Automatic basin wash with timer for 4-basket sorting table PNC 865450 ☐
- Foldable tray slide for 4-basket sorting table, 2130 mm PNC 865455 ☐

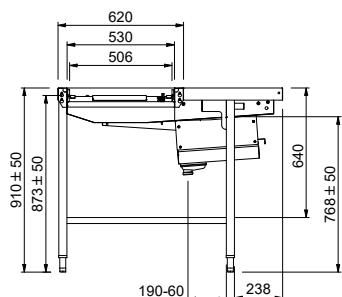
APPROVAL: _____



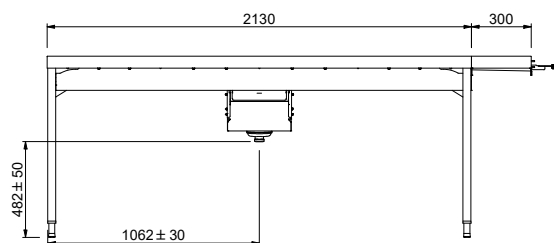
**Handling System
Automatic Sorting Table, Dishwashing
Driven with 4 Baskets - Right to Left,
2130mm**

- Retractable pre-rinse unit with fixed thermostatic water mixer, hose length, 14mm PNC 865460 ☐
- Brackets to support baskets under the sorting table PNC 865478 ☐

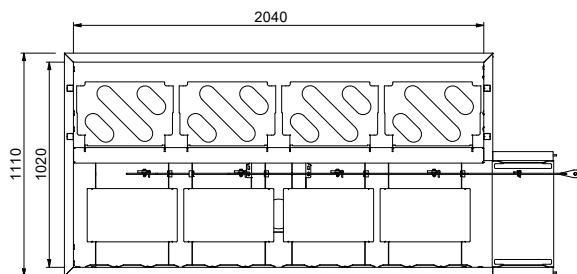


Side


Factory mounted waste rack

Front


D = Drain

Top

Key Information:

External dimensions, Width:

865466 (HSDDS4RL) 2430 mm

External dimensions, Depth:

1110 mm

External dimensions, Height:

910 mm

Net weight:

52 kg

Height adjustment:

50/50 mm

Basket movement:

Right to left

Position to dishwasher:

Loading

Basin material:

 Stainless Steel AISI 304 - EN
 1.4301

